



BLOWTECH ENGINEERS PVT LTD

(An ISO 9001:2015, SSI & MSME registered company)

PRODUCT BROCHURE
(T E C H N I C A L)



WWW.BLOWTECHENGINEERS.IN



Tube Axial Fans



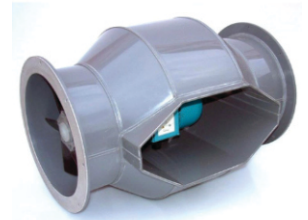
Direct drive fan

Our Axial flow fans range from 9 inches to 60 inches with an airfoil section impeller made of aluminium, MS and SS materials.

Built with robust construction, the fans are engineered to provide maximum efficiency, consume less power and reduce noise levels.



Belt drive fan



Bifurcated fan

Technical chart

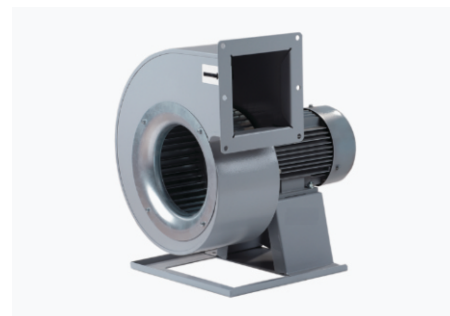
Fan size (in inches)	Speed	Motor (direct)	Capacity (H.P.) V - Belt	Free air delivery	Capacities in CFM at static pressures below (in WG)							
	mm	RPM	Drive	Drive	Phase	CFM	5mm	10mm	15mm	20mm	25mm	35mm
12	305	1440	0.25	0.75	1 & 3	1000	900	800	300			
		2880	0.75	0.75	1 & 3	1600	1400	1200	1000	700		
15	380	1440	0.50	0.75	1 & 3	2050	1950	1600	1450	950		
18	455	1440	0.50	0.75	1 & 3	3060	2850	2600	2250	1950		
		2880	1	1.5	3	5500	4500	3500	3000	2500	2000	1800
24	610	1440	1	1	3	6500	6410	5550	4680	3220		
27.5	700	1440	2	2	3	10600	10550	10250	8200	7600	5850	
32	810	960	2	2	3	10500	9350	7600	5850			
		1440	2	2	3	16000	15400	14600	13450	12300	11400	8190
36	915	960	3	3	3	19500	17500	15400	12000	10000		
		1440	5	5	3	26000	24500	23100	21600	20000	19000	17500
39.5	1000	960	5	5	3	21100	19300	18150	15800	13450		
47.5	1200	720	7.5	7.5	3	26600	25200	22800	17600			
		960	10	10	3	35700	33900	32800	31000	29200	26300	18700
52	1320	960	15	15	3	41200	38000	36500	34000	31000	29000	24500
60	1524	960	20	20	3	52000	48000	45000	43000	41000	39500	36500

*We make fans as per customized requirements

Centrifugal Blower



Belt drive centrifugal blower



Direct drive blower



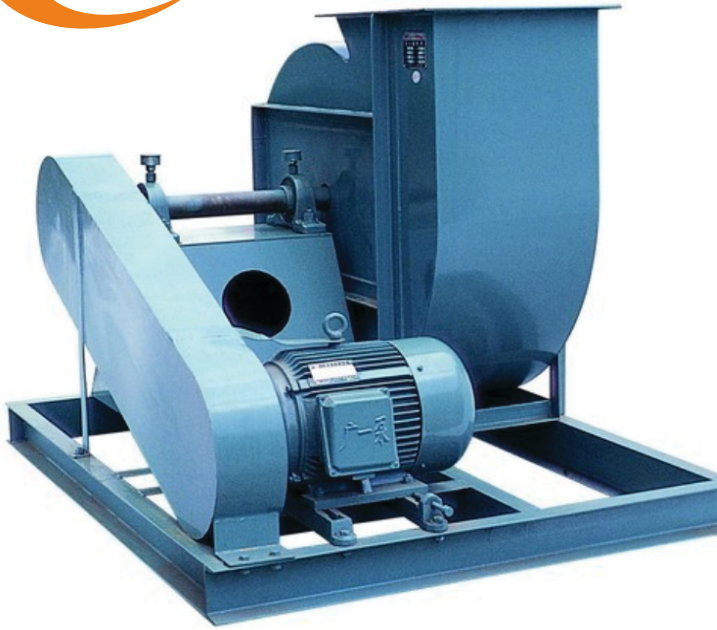
Impeller

Technical chart

Pressure Inches W.G.	1"	2"	3"	4"	6"	8"	10"	12"	16"	20"	24"	28"	32"	36"	42"	48"	50"
Motor H.P.	Approximate Capacities in Cubic feet per minute (CFM) at N. T. P																
0.5	1500	800	500	400	320	260	200	160	130	-	-	-	-	-	-	-	-
1.0	3000	1600	1050	800	640	530	400	320	260	200	-	-	-	-	-	-	-
2.0	6000	3200	2130	1600	1280	1060	800	640	530	400	320	270	-	-	-	-	-
3.0	8000	4800	3200	2400	1920	1600	1443	1155	950	720	570	400	340	-	-	-	-
5.0	11500	7350	5150	4000	3200	2650	2400	1925	1600	1203	960	800	570	500	-	-	-
7.5	14500	10250	7500	6000	4800	4100	3000	2880	2400	1800	1440	1200	1030	750	650	-	-
10	20000	13400	9750	8000	6400	5330	4000	3850	3200	2400	1925	1600	1375	1000	880	-	-
12.5	27500	17000	12500	10000	8000	6660	5000	4800	4000	3000	2600	2000	1720	1500	1100	900	-
15	33000	20000	15250	12000	9600	8000	6000	5775	4800	3600	2880	2450	2000	1800	1600	1100	960
20	45000	25000	18500	16000	12800	10600	7800	7700	6400	4800	3850	3200	2750	2400	2130	1450	1280
25	55000	40000	28000	18000	16000	13330	10800	9600	8000	6000	4800	4000	3430	3000	2200	1850	1600
30	-	48000	34000	24000	19200	16000	12000	11500	8800	7200	5600	4800	4100	3600	3200	2200	1900
40	-	65000	48000	34500	24000	21300	16000	15400	10500	9600	7700	6410	5500	4800	4200	2900	2550
50	-	-	53000	40000	32000	26000	20000	17500	13300	12000	9600	8020	6870	6000	5350	3650	3200
60	-	-	-	48000	38000	32000	24000	19200	16000	14400	11550	9600	8250	7200	6400	4360	3800
75	-	-	-	-	48000	40000	30000	24000	20000	18000	14450	12000	10300	9000	8000	5400	4800
100	-	-	-	-	-	53000	40000	32000	26600	24000	19000	16000	13750	12000	10700	7300	6400

Material of Construction: MILD STEEL (M.S), S.S-304,S.S-316,S.S-316L, PPGL, PPGL+FRP & FRP Coated

**Customization available suiting Customer needs.

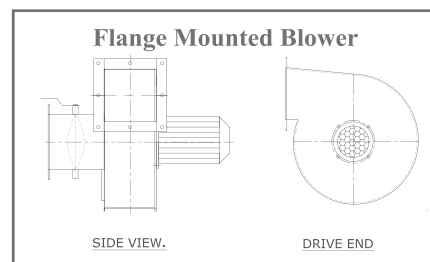
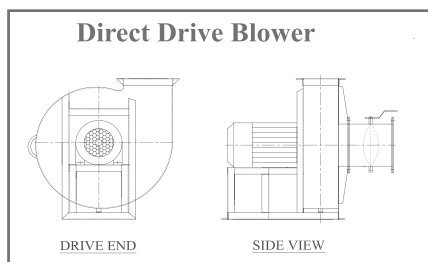
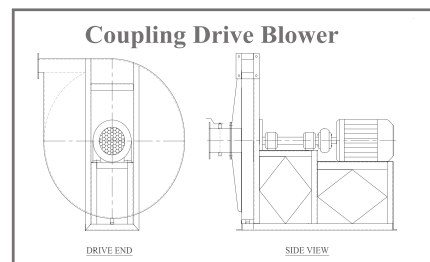
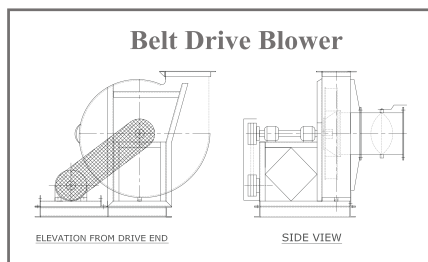


SISW belt drive blower

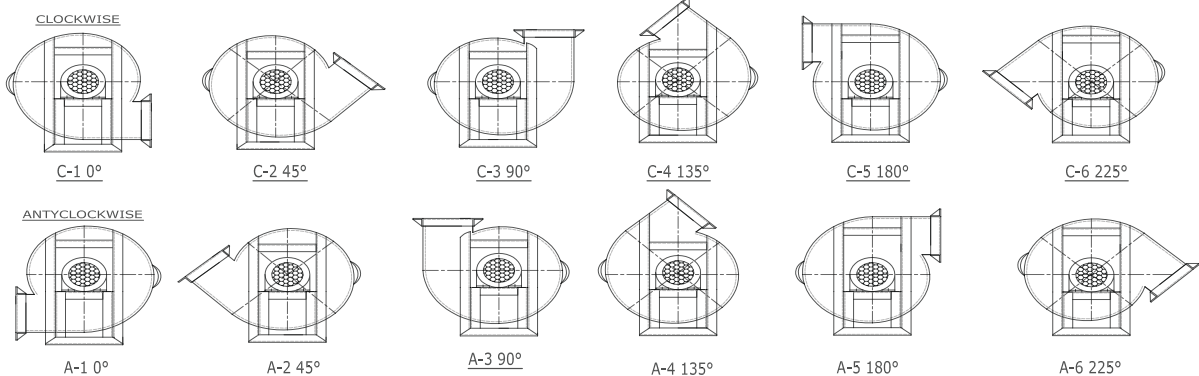


DIDW belt drive blower

Types of blowers



Direction of discharge from suction end



Tubular Mancooler



Our mancoolers are manufactured superior grade components & pioneering technology, under the guidance of our skilled professionals.

Technical chart

Sr. no.	Fan size (Inches)	Type of Fan	Input Power (HP)	MOC	Fan speed (RPM)	Discharge pressure (mm)	Capacity (CFM)	Phase
1	18	Stand Mounted	0.5	M.S / S.S with M.S Angel Frame & Caster Wheel	1400	15	3000	1&3
2	24	Stand Mounted	1		1400	15	6500	1&3
3	30	Stand Mounted	2		1400	15	10600	3
4	36	Stand Mounted	3		960	15	19500	3
5	40	Stand Mounted	5		960	15	22000	3
6	48	Stand Mounted	10		960	15	35000	3
7	52	Stand Mounted	15		960	15	42000	3

*Customization available suiting Customer needs.

Door Air Curtains



Our signature choice of air curtains help keep the interior isolated from the outside environment and free of insects and dust. All our air curtains come with different air velocity settings to best suit your needs.



Alpha & Beta



Gamma

Sr. no.	Size	Motor (HP/RPM)	Power input (230/450V)	MOC	Air velocity(m/sec) - Alpha model	Air velocity (m/sec) - Beta model	Air velocity (m/sec) - Gamma model
1	3 feet	0.25 / 1400	1 & 3 PH	CRCA Powder coated / S.S. 304	12 - 14	15 - 17	22 - 24
2	1 meter	0.25 / 1400	1 & 3 PH		12 - 14	15 - 17	22 - 24
3	4 feet	0.25 / 1400	1 & 3 PH		12 - 14	16 - 18	22 - 24
4	5 feet	0.25 / 1400	1 & 3 PH		14 - 16	16 - 18	22 - 24
5	6 feet	0.25 / 1400	1 & 3 PH		14 - 16	16 - 18	22 - 24

Cooling Fans

Our pedestal & wall mounted fans are constructed with cast aluminium alloy. The high efficiency aerofoil section blades are mounted onto the motor shaft with suitable protection guards.



Sr. no.	Fan size (inches)	Type of fan	Input power (watts)	Fan speed (rpm)	Discharge (meter)	Capacity (m ³ /hr)	Weight (kg)
1	18	Wall mounted	100	1400	5	12000	13
2	18	Pedestal	100	1400	5	12000	20
3	24	Wall mounted	190	1400	10	18000	18
4	24	Pedestal	190	1400	10	18000	27
6	30	Wall mounted	350	1400	15	30000	23
5	30	Pedestal	350	1400	15	30000	34
7	36	Wall mounted	490	1400	20	39000	31
8	36	Pedestal	490	1400	20	39000	42

*Customization available suiting Customer needs

Turbine Blower



We are the leading manufacturers of turbine blowers with a wide-spread network of related services. The compact size, high power capacity and the quality of materials used in the blower is what makes our product different from the others.



Technical chart

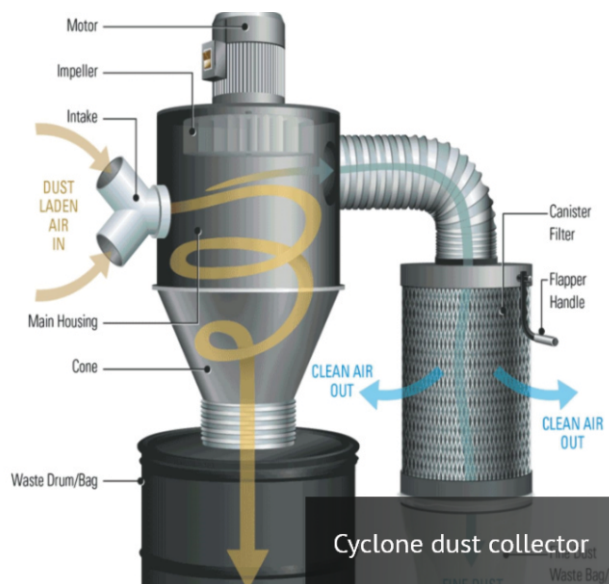
Model	K.W.	HP/3000 rpm	Capacity m3/hr	Pressure (mbar)	Vacuum (mbar)	Weight (kg)	Inlet & outlet (in)
BTE-25	0.18	0.25	50	60	55	14	1
BTE-50	0.37	0.50	90	90	85	22	1.25
BTE-75	0.55	0.75	120	125	120	25	1.5
BTE-100	0.75	1	200	140	130	27	1.5
BTE-150	1.1	1.5	250	155	145	36	1.5
BTE-200	1.5	2	300	200	165	40	2
BTE-250	2.2	3	400	225	220	49	2
BTE-300	3.7	5	700	250	245	83	2.5
BTE-350	5.5	7.5	900	270	260	100	2.5
BTE-400	7.5	10	1200	350	340	130	2.5
BTE-450	11	11	1800	400	385	170	2.5

Dust Collector



(Cyclone Dust Collector)

Our state-of-the-art range of Dust collectors includes Cyclone and Pulse Jet dust collectors that match the highest of the industry standards. Each dust collector has its own set of uses and advantages to best match your requirements and keeps your workspace clean and dust-free.



Technical chart

Pressure (inch W.G.)	6"	8"	10"	12"	16"	20"	24"	28"	32"	36"	42"	48"
Motor H.P.												
1	675	300	250	225	150							
2	1000	650	525	460	340	280						
3	1500	1080	1000	765	530	420	320					
5	3000	1800	1600	1350	900	720	600	500				
7.5	4000	3000	2550	2000	1490	1080	900	850	720			
10	5250	4000	3250	2900	2000	1575	1300	1175	1000	925		
12.5	6750	5100	4300	3575	2475	1970	1640	1400	1230	1152	900	
15	8250	6250	5500	4300	3100	2370	2025	1700	1550	1440	1080	
20	11000	7500	6800	5500	4320	3350	2700	2400	2100	1850	1440	1150
25	12500	8750	8500	7200	5400	4250	3375	3000	2550	2325	1800	1250
30		10500	9500	8500	6500	5200	4050	3500	3175	2800	2250	1800
40			11200	10500	7800	6500	5200	4400	3850	3300	2800	2250
50				12000	9500	8000	6750	5900	5250	4600	3700	3000
60					11000	9300	7900	6600	6000	5250	4350	3250
70						10500	9000	7300	6250	5400	4675	

*Customization available suiting Customer needs.

Motorized Roof Exhaust Fan



Blowtech Engineers have developed “FRP Based Motorized Roof Exhaust Fan” as a new concept at very economical input cost to provide very effective industrial ventilation system by extracting fume, heat, gases and smoke from the factory production area.

This fans are made in-house by a skilled team of workers, our specially designed and crafted motorized FRP Base Roof Exhaust Fans find applications in multiple industries, ranging from Textile, Yarn, and Fabric to Oil and Gas, Food and Manufacturing workshops for top of the line ventilation and dehumidification.



Technical chart

Sr. No.	Model	Size (inch)	Motor (HP/RPM)	Capacity (M ³ /hr)	Pressure (mm wg)	Area covered (sq. ft.)	Material of Construction (MOC)
1	BTE-24	24"	1/1400	8850	15	400	4 mm thick FRP base with round casing, bird screen and top canopy
2	BT-32	32"	1.5/960	15250	10	650	5 mm thick FRP base with round casing, bird screen and top canopy



Salient features and advantages

Motorised roof exhaust fans provide cross ventilation in all types of manufacturing process by creating induced draft pressure which allows fresh air to travel inside the factory through windows, grills, doors and forced draft fresh air input through air washer unit / AHU through ducts.

By installing motorised roof exhaust fans, we can increase productivity, improve output air quality of goods, lower the maintenance cost of machinery, provide good health to working employees by extracting heat, fumes, gases, humidity, and smoke from the production area.

Features of FRP Based Motorized Roof Exhaust Fans.

- 1 Light Weight
- 2 Easy Installation
- 3 Leak-Proof Installation on roof
- 4 Rigid and robust construction
- 5 20 times higher efficiency compared to powerless roof ventilators.
- 6 Anticorrosive for chemical fumes
- 7 Life 15 Years

For Industrial Needs

- 1 Textile Unit
- 2 Yarns & Fabric Units
- 3 Dying Plant
- 4 Steel and Galvanizing Plant
- 5 Foundry Cupola
- 6 Food Industry
- 7 Chemical Industry
- 8 Bakery and Confectionery
- 9 Printing, Plastics Industries
- 10 Paints & Varnish Industries

Pulse Jet Dust Collector



Technical specifications

	Cyclone dust collector	Pulse Jet dust collector
Air flow	500 CFM To 45000 CFM	500 CFM to 60000 CFM
Pressure	150mm WG To 600mm WG of Manometer	200mm WG To 900mm WG of Manometer
Efficiency	Up to 99% capturing efficiency	Up to 99% capturing efficiency
Bag cleaning	Manual	Automatic and timer display
Dimension	As per the design	As per the design
MOC	Mild Steel (M.S), S.S-304, S.S-316, S.S-316L & customized as per needs	Mild Steel (M.S), S.S-304, S.S-316, S.S-316L & customized as per needs
Finishing	Powder coated / matte finished	Powder coated / matte finished
Power supply	Single phase and three phase	Single phase and three phase
Voltage and Frequency	415V / 380V, 50Hz and 60Hz	415V / 380V, 50Hz and 60Hz
Motor for hazardous locations	Hazardous location rated - Exe, Exd, ExnA, PESO, IIA, IIB & IIC	Hazardous location rated - Exe, Exd, ExnA, PESO, IIA, IIB & IIC
Customization	As per customer's needs	As per customer's needs
Mounting	Floor Mounted	Floor mounted
Controlling	Dust collection	Dust collection
Control panel	Yes, On Customer Request	Yes
Filtration	Up to 5 μ m & customised	Up to 0.5 μ m & customised
Filtration cloth	Non oven / canvas bag filters	Non oven / cartridges

Fume Scrubber (PP/PVC/FRP/MS/SS)



Made with chemically corrosion resistive material, our fume scrubbers are specially engineered to control pollution by mitigating chemicals, gases, acid / alkaline fumes, etc by passing them through a medium that is designed to absorb these harmful materials.



Technical specifications

Air flow	500 CFM to 125,000 CFM
Pressure	100 mm WG To 600 mm WG of Manometer
Efficiency	Up to 96% capturing efficiency
Pollutants removed	Acid glasses, Hydrogen Sulphide, Ammonia, Sulfur Oxide, SOx removal, Ethylene Oxide, N - Methyl pyrrolidone, Formaldehyde, NOx removal
Dimension	As per the design
MOC	Mild steel, PPGL+FRP,, FRP, S.S - 304, S.S - 316, S.S - 316L
Finishing	FRP lined / Powder coated / Matte finished
Power supply	Three phase & single phase
Voltage and Frequency	415V / 380V, 50Hz & 60Hz
Motor for hazardous locations	Hazardous location rated - Exe, Exd, ExnA, Extd, PESO, IIA, IIB & IIC
Customization	As per the customer's needs
Mounting	Floor mounted
Controlling	Pollution control
Control panel	Yes, On Customer Request
Filtration stage	Single / double / customised

Storage Tank (PP/PVC/HDPE/MS/SS)



Our highly stable, large volume tanks are manufactured using the best materials to hold large quantities of chemicals and stay resistive to them. Our range of tanks come in all shapes and sizes to serve multiple industrial purposes and can be customised as per the customer's needs.



Technical specifications

Capacity	500 litre up to 100,000 litre
MOC	Mild steel, PPGL+FRP, FRP, S.S.- 304, S.S.- 316, S.S.- 316L
Specific weight	Specific weight of the product contained - $\leq 1.3 \text{ kg/dm}^3$
Design pressure	Atmospheric / Liquid head
Dimension	As per the design
Application industry	Acid storage, chemical storage, Zinc plating, Galvanizing
Finishing	Powder coated / matte finish, anti-corrosive Epoxy paint and customised
Customization	As per the customer's needs
Types of tanks	Round, square, rectangular, conical, spherical, spiral and customised
Mounting	Vertical, horizontal, angular and customised

Air Handling Unit (AHU)



Designed in-house by our team, our air handling units (AHU) provide an industry-grade cooling and ventilation.

The unit comes packed with blowers in addition to sound dampers to provide a silent cooling experience without much disturbance. This makes it suitable for wide variety of small and large scale surroundings.



Technical specifications

Air flow	1000 CFM to 1,25,000 CFM
Pressure	25mm WG to 500 mm WG of Manometer
Efficiency	Up to 98% capturing efficiency
Dimension	As per the design
MOC	25 mm and 50 mm thick, single / double skin panel construction
Finishing	Powder coated / matte finish
Power supply	Single phase and three phase
Voltage and Frequency	415V / 380V, 50Hz and 60Hz
Motor for hazardous locations	Hazardous location rated - Exe, Exd, ExnA, Extd, PESO, IIA, IIB and IIC
Customization	As per the customer's needs
Mounting	Floor mounted / ceiling suspended / loft mounted
Controlling factor	Temperature, humidity, air movement and cleanliness
Control panel	Yes, On Customer Request
Filtration	HEPA / EU - 9 / Microvee / EU - 4, HEPA / EU -12 and bag filters

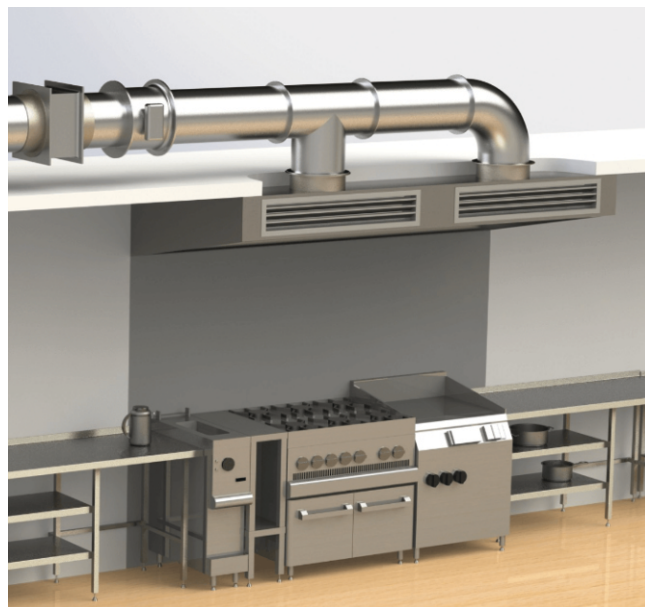
Kitchen Ventilation System



Specilized in Complete Kitchen Ventilation System

Salient features

- 1 Clean kitchen: 100% of of the smoke and oil will be cleaned by our system, leaving behind a sparkling kitchen.
- 2 Cold kitchen: Our systems are designed with ample air changes which keeps the kitchen cool.
- 3 Noise free: Our systems emit minimum noise to ensure clear audibility among the people in the room.
- 4 Pollution control: Our systems are designed for pollution control, in accordance with the Municipal rules.
- 5 Hygenic atmosphere: Our systems take care of 10% exhausts and eliminate the smell of non-veg foods
- 6 Aesthetic: Our systems help enhance the beauty of your kitchen.
- 7 Servicing: Post the guarantee period, our services come at reasonable costs.



Technical chart

Air flow	500 CFM to 125000 CFM
Pressure	25mm WG to 500 mm WG of Manometer
Application	Kitchen fume extraction and freah air supply
Dimension	As per the design
MOC	S.S-304, S.S-316, S.S-316L, mild steel ,galvanised iron& customized
Finishing	Powder coated / matter finished
Power supply	Snigle phase and three phase
Voltage and frequency	415V / 380V, 50Hz and 60Hz
Motors for hazardous location	Hazardous location rated - Exe, Exd, ExnA, Extd,PESO,IIA,IIB&IIC
Customization	As per the customer's needs
Mounting	Floor mounted / wall mounted / ceiling suspended
Controlling	Kitchen cooking fume
Control panel	Yes, on customer's request

Dry Scrubber



Our collection of dry scrubbers are especially made with quality materials that last long and stay functional, cleaning pollutants out of exhaust streams to give the best value for money.

Our high capacity scrubbers ensure top of the line cleaning and maintenance.

Technical chart

Model No.	BT DS 3000 & BT DS 3000 UV	BT DS 4500 & BT DS 4500 UV	BT DS 6000 & BT DS 6000 UV
Capacity	3000 CFM	4500 CFM	6000 CFM
Dimensions (in mm)	H515*W695*L720	H515*W695*L1850	H515*W695*L2410
Metal of construction	MS CRCA 1.6mm	MS CRCA 1.6mm	MS CRCA 1.6mm
	110 - 220V AC, 50HZ, 50W	110 - 220V AC, 50HZ, 50W	110 - 220V AC, 50HZ, 50W
Static pressure	100 Pa	100 Pa	100 Pa
Particle capture range	0.01µm - 10 µm	0.01µm - 10 µm	0.01µm - 10 µm
Maximum efficiency	96% DOP single pass test	96% DOP single pass test	96% DOP single pass test
ESP cell technology	99% DOP double pass test	99% DOP double pass test	99% DOP double pass test
Number of cells	2	3	4
Operator interface	Green LED - healthy	Green LED - healthy	Green LED - healthy
UV details (extra accessories)			
UV lamp wattage	75W * 02	130W * 02	130W * 04
UV output	230 micro watt/sqcm	420 micro watt/sqcm	420 micro watt/sqcm
Ozone output	4.2 grams/hour	420 micro watt/sqcm	420 micro watt/sqcm
Rated life	10000 hours	10000 hours	10000 hours
Control unit	Digital display	Digital timer display	Digital timer display
Operator interface	UV on blue LED indication	UV on blue LED indication	UV on blue LED indication

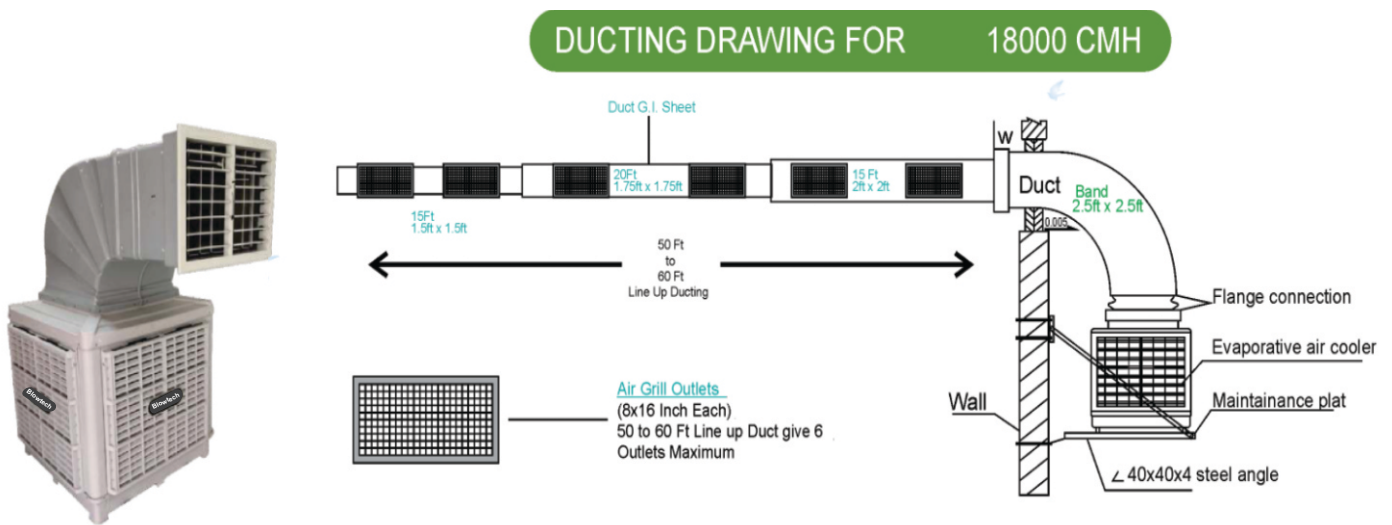
Air Washer Unit



Blowtech air washer unit are designed to ensure high durability and performance.

This fan is more effective to provide best cooling effect up to 60 feet length for all industrial applications.

Our air washer units are made with materials of the highest grade and standards of construction to ensure the purest quality of air in your industry, office or home!



Technical specifications

Product code	BT AWU (44)
Application	Cold Air Supply
Fan size	44" (Sweep-1100 mm)
Capacity	18,000 CMH
Pressure	18 mm W.G. of Manometer
Motor rating	1.5 HP / 1500 RPM, 3 Phase
Voltage and frequency	415V / 380V, 50Hz & 60Hz
Sound level	75 dBA, 1.5 meters apart
MOC	Plastic Molded with bifurcated grills. M.S. + FRP -3 Nos Special design Aero foil blades
Filter	42" x 42" x 2" – PP filter at suction end- 4 ways
Fitment	Wall mounted
Water tank	35 liters
Accessories	Pump, spray nozzles, dust filter, overload protection
Motor for hazardous location	Hazardous location rated - Exe, Exd, ExnA, Extd, PESO, IIA, IIB & IIC

Our Regular Esteem Client



JK Files (India) Limited
(A Subsidiary of **Raymond** Limited)



Hindustan Pencils Pvt. Ltd.
since 1958



BLOWTECH ENGINEERS PVT LTD

(An ISO 9001:2015, SSI & MSME registered company)

About us

Setting new benchmarks of performance, we are one of the leading names in the industry, engaged in the manufacturing and exporting of world-class industrial air pollution control equipment and ventilation systems, such as - Centrifugal blowers, Axial flow fans, Industrial air handling units, Dust collectors, Air curtains and Motorised and powerless roof exhaust fans.

Registered office & factory:

Unit No. 12,13 &14, Classic Industrial Estate,
Poman Village, Kaman-Bhiwandi Road,
Near Jain Temple, Taluka: Vasai,
Dist - Palghar - 401 208, Maharashtra (India)

Contact:

Board line - 9076109010 / 9076109020

Mobile - 9821295016

Email - sales@blowtechengineers.in
marketing@blowtechengineers.in

Web : www.blowtechengineers.in, www.blowtechengineers.com